

ELECTRIC DONER KEBAB BLADE

CONTENTS

A	GENERAL INFORMATION	Page 2
A1	PRODUCT DESCRIPTION	Page 3
A2	TECHNICAL INFORMATION	Page 3
A3	TRANSPORTATION	Page 4
A4	UNPACKING	Page 4
B	REMOVE AND INSTALL	Page 4
C	ATTENTION	Page 6
D	OPERATION	Page 7
E	CLEANİNG & MAINTENANCE	Page 9
F	TROUBLESHOOTING	Page 11
G	SPARE PART LIST- EXPLODİNG DRAWİNG	Page 12
H	SWİTCHİNG POWER SUPPLY	Page 13



ELECTRIC DONER KEBAB BLADE

A GENERAL INFORMATION

Before installing the appliance, read operation and maintenance instructions carefully. Wrong installation and part changing may damage the product or may cause injury on people. These are not in our company's responsibility to damage the appliance intentionally, negligence, detriments because of disobeying instructions and regulations, wrong connections. Unauthorized intervention to appliance invalidates the warranty.

1. This instruction manual should be kept in a safe place for future reference.
2. **Installation should be made in accordance with ordinances and security rules of that country by a qualified service personnel.**
3. This appliance has to be used by trained person.
4. Please turn off the appliance immediately in the event of malfunction or failure. The appliance should be repaired only by authorized service personnel. Please demand original spare part.

ELECTRIC DONER KEBAB BLADE

A1 PRODUCT DESCRIPTION

*The Professional electric döner kebab blade, that provides high efficiency has been designed to mix range of foodstuffs, varying from cream to dough for industrial kitchens.

Product Code	Dimensions (mm)	Weight (kg)	Packaging Dimensions (mm)
JP.100E	260x100x130	2,5	260x220x250

A2 TECHNICAL INFORMATION

Product Code	Capacity (kg/day)	Cutting Thickness (mm)	Power (W)	Operating Voltage (V)
JP.100E	Max.150 (10 hours)	0 - 10	150	24VDC

JP.D.01	Smooth Blade	Blade Diameter (mm)	120
JP.T.01	Knurled Blade	Blade Diameter (mm)	120

ELECTRIC DONER KEBAB BLADE

A3 TRANSPORTATION

*This appliance can be moved by hand from area to area. Do not crash and drop the appliance while transporting.

A4 UNPACKING

*Please unpack the package according to the security codes and ordinances of current country and get rid from the pack. Parts which contacts with food are produced by stainless steel. All plastic parts are marked by material's symbol.

*Please check that all the parts of appliance had come completely and if they are damaged or not during the shipping.

B REMOVE AND INSTALL

*Do not remove metal cap or circular blade when the machine is working.

*Disconnect power supply before removing and installing any of the components from headset.

*Be careful, the blade is very sharp.

➤ Remove and install the metal cap

- Remove the metal cap



*Turn the adjustment screw counterclockwise until the top of metal cap loose.

*Remove the metal cap (follow the direction of arrows).



- 1) Remove the place of arrow 1
- 2) Remove the place of arrow 2
- 3) Remove the place of arrow 3

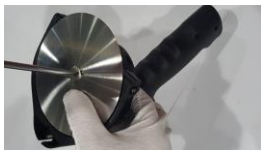
- Install the metal cap

*Reverse above operation steps to install the metal cap.

ELECTRIC DONER KEBAB BLADE

➤ Remove and install the circular blade

• Remove the circular blade



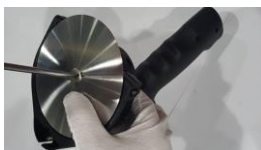
*Use screwdriver or coin to unscrew the screw in the centre of the circular blade.

Use a cloth to protect your hands from injury



*The blade is very sharp, wear gloves or use other safety tools to remove the circular knife. Do not take it directly by hand.

• Install the circular blade



*Reverse above operation steps to install the circular knife. The surface with words printed (flat side) should be outward.

*The screw in the centre of the blade must be fully tightened. In order to fully tighten, the other hand should secure the circular blade.

• Remove and install the slide

The function of slide:

1. Keep the inward side of circular blade clean of the meat residues.
2. Protect the blade from being blocked by meat residues.



*Pull out the slide at the direction of arrow 4 to remove it.



*Reverse the operation to fit it.

The main body after removing the metal cap, the blade and the slide.

*The headset unit must be kept dry. Do not remove any component of this unit. Do not wet it and do not immerse it into water.



ELECTRIC DONER KEBAB BLADE

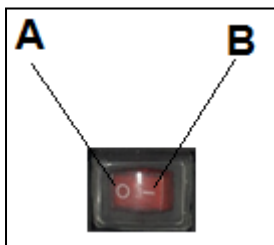
C ATTENTION

- Before using, please check the power cord, adapter, blades and other components are intact. If there is any damage, please contact with the manufacturer, do not repair by yourself.
- Make sure the power supply is disconnected when removing or installing any component.
- Make sure that the circular blade must be tight, screwed and the metal cap must be well installed before the power on.
- Switch on only in use.
- Keep it far away from children.
- Do not touch the metal cap and circular blade during operation.
- Do not wet the main body and adapter and do not immerse them into water.
- Do not use steel wool or corrosive liquid to clean the product.
- Please wear protective gloves when removing, installing and cleaning the blade to avoid hands injuries.
- Please note the safety points at each operating step when using

ELECTRIC DONER KEBAB BLADE

D OPERATION

*Control Panel;



A : SWITCH OFF

B : SWITCH ON

*Operating;



*Plug the power supply into electric socket.(Make sure that the supply voltage must be in accordance with the voltage indicated on the power supply).



*Plug the power supply into the handset correctly. (Insert and tighten the screw of power supply socket to the end of the headset handle socket).



Pic.3

*Hold the handset close to the meat. Keep the metal cap and the meat at an angle of 25° , which is the best state for cutting.

ELECTRIC DONER KEBAB BLADE



*Switch on, to start the motor. Cut the meat from top to downwards.

- Turn on the switch only when in use , and switch off immediately when finish cutting.
- Do not place hands close to the blade.



*Cutting depth can be adjusted at a range of 0-10mm by turning the adjustment screw.

1. Clockwise rotation, decrease cutting depth.
2. Counterclockwise rotation, increase cutting depth.

Do not turn the adjustment screw counterclockwise too much. It is very dangerous when the screw undone and the metal cap become loose.

ELECTRIC DONER KEBAB BLADE

E CLEANING & MAINTENANCE

➤ CLEANING;

The headset must be cleaned daily to ensure hygiene. Follow the above steps to remove the metal cap, blade and slide before cleaning.

1. The surface of the main body and power supply can be cleaned by a cleaning rag. Do not immerse them in water; they must be kept in a dry place.
2. The metal cap, blade and slide can be washed in water. They also can be cleaned by household detergent. Do not use heavy detergent.
3. After cleaning and drying, follow the above section to install.

➤ MAINTENANCE;

1. The operation mode is intermittent operation. To ensure the working life, do not work continuously more than 2 minutes every switch on; otherwise, the working life will be shortened. The daily capacity is 150 kg at max.
2. Switch off immediately when finished cutting; do not make unnecessary waste for useful life.
3. Storage temperature: 0°C/ 40°C
Do not put it in high temperature, high humidity or corrosive gas environment.
4. To handle and hold softly.
5. Do not bring the product near or in contact with magnetized objects to avoid performance being deteriorated.

➤ CIRCULAR BLADE;



Round blade and sawing blade

ELECTRIC DONER KEBAB BLADE

➤ GRIND THE BLADE;



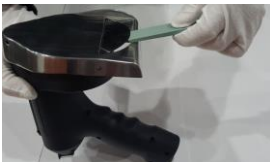
Grind the round blade, the sawing blade is not suggested to be grinded. The pictures are just for showing how to operate.

Wear protective glasses or use other protective tools to protect eyes from being injured by scrap.

1. Turn the adjustment screw to adjust the space between the metal cap and circular blade until the grinding stone can be easily inserted.
 - Do not turn the adjustment screw counterclockwise too much. It is very dangerous when the screw undone and the metal cap become loose.

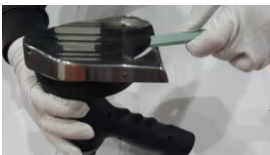
➤ GRIND THE INWARD SIDE OF CIRCULAR BLADE;

- Hold the grinding stone in contact with the incline of the blade and keep the grinding stone and the plane surface of circular blade at an angle of 15-20°



- Switch on until the blade become sharp, then switch off.

➤ GRIND THE UPPER SIDE OF CIRCULAR BLADE;



- Hold the grinding stone in contact with the upper surface of circular blade.
- Switch on until the blade become sharp, then switch off.

➤ REPLACEMENT OF THE CIRCULAR BLADE;

The circular blade must be replaced by a new one when its diameter has been reduced for more than 2cm. See learn how to install the circular blade.

ELECTRIC DONER KEBAB BLADE

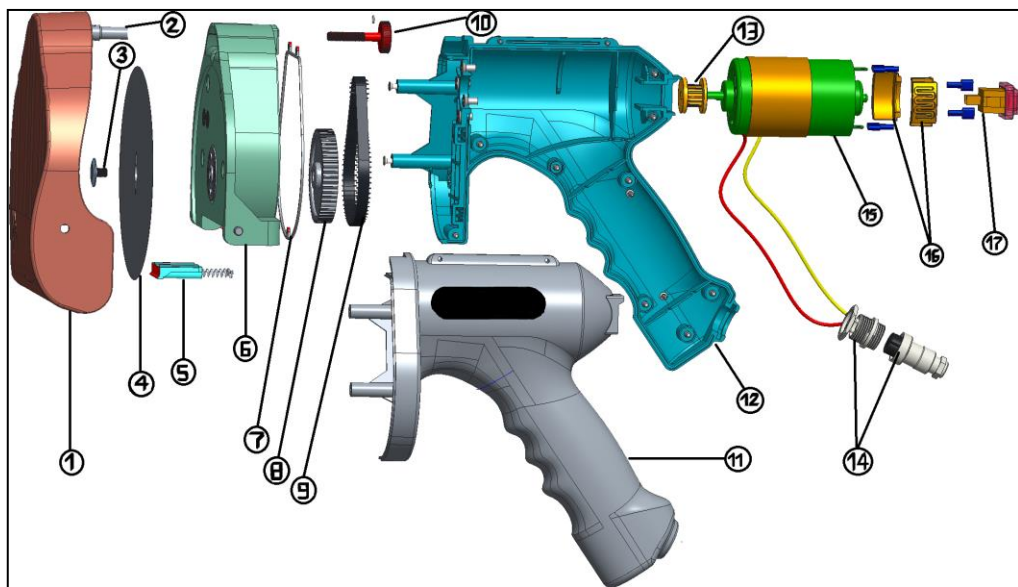
F TROUBLESHOOTING

PROBLEMS	REASONS	SOLUTIONS
THE CIRCULAR BLADE DO NOT RUN WHEN SWITCH ON	The tube fuse of power supply breakdown.	Change a new tube fuse
	Power supply is not connected.	Check the plug and socket, or change another socket.
CIRCULAR BLADE IS BLOCKED.	The slide is not well installed.	Check the slide, and install it correctly.
DIFFICULT TO CUT	The blade is dull	Grind the blade or change a new one.
	The circular blade is installed backwards.	Check the circular blade and make sure the surface with words printed upwards.
THE MOTOR BECOME WEAK	The temperature is too high.	Stop to rest for a while.

Any problem that is not mentioned here, please contact with the manufacturer, do not repair by yourself.

ELECTRIC DONER KEBAB BLADE

G SPARE PART LIST-EXPLODING DRAWING



NO	PART NAME
1	METAL CAP
2	ADJUSTMENT NUT
3	CIRCULAR BLADE SCREW
4	CIRCULAR BLADE
5	SLIDE
6	BLADE HOUSING
7	HEAD GASKET
8	PLASTIC PULLEY
9	BELT
10	ADJUSTMENT SCREW
11	CASING (LEFT)
12	CASING (RIGHT)
13	METAL PULLEY
14	ELECTRIC SOCKET
15	MOTOR
16	MOTOR PADS
17	ON/OFF SWITCH

ELECTRIC DONER KEBAB BLADE

H SWITCHING POWER SUPPLY

*Power supply converts 120 VAC or 240VAC input into 24VDC that is required for the Headset.



*THE MAIN FEATURES:

- Protections: Short Circuit/ Overload/ Over Voltage
- Cooling by free air convection
- LED indicator(on the on/off switch) for power on
- High efficiency, long life, high reliability.

*SPECIFICATION:

Input: ☐ 90-132VAC ☐ 180-264VAC

Frequency: 47-63Hz

Efficiency: 86%

Output: 24VDC/6.5A

Rated Power: 156W

Cable length(input): 1.70m (3x0,75mm²)

Cable length(output): 2.10m (2x0,75mm²)